

SANDON TOPICS

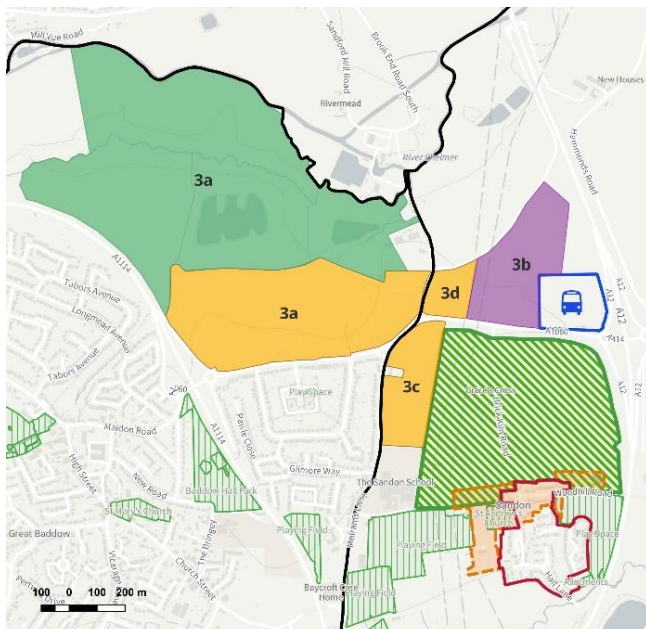
Winter 2021 Newsletter from Sandon Parish Council



www.sandonparishcouncil.co.uk



Chairman's Message – November 2021



KEY

- Parish Boundaries
- Sandon Settlement Boundary
- Sandon Conservation Area
- Green Gap
- Open Space
- Existing Park & Ride

Strategic Growth Allocations

- New Housing Site (S7 and Relevant Growth Site or Strategic Growth Site Policies)
- Proposed Country Park (SGS3, SGS6)
- Proposed Employment Area (S7, SGS6, SGS3b, DM4)

Contains OS data © Crown copyright and database right (2021).

Since our previous Topics, we have been inundated with planning matters, especially for the large number of houses along Molrams Lane and Maldon Road. Redrow and Hopkins have now indicated the number of houses they are hoping to build and the numbers are not as hoped, or stated, in the Local Plan! 3c is the big development next to Sandon School where 100 houses were expected, and 3d was for 50. Now there are intended 190 houses, which is a 27% increase. Both Sandon and Great Baddow Parish Councils have noted that this is not acceptable, especially with the Manor Farm numbers 3a going from 250 dwellings to 340 (a 36% increase). We felt that the infrastructure really could not cope with the original numbers, let alone this huge increase from 400 to 530 houses. We are waiting to see what CCC agree to! Note that 3b, which is the Commercial Centre, is still outstanding.

20/01720/FUL Land South West Of Cards Road where the flexible electricity generation facility was proposed, consisting of 4 gas reciprocating engines in the southwest corner of a field next to Sandon Brook, was refused. Unfortunately, this is now going to appeal. Very much hoping this fails!

Lockdown has spurred home owners to improve and enlarge their homes. This is to be expected with so many

people now working from home until their companies call them back.

We have also seen a huge increase in the number of puppies in Sandon, and really nice to see so many more people taking to the footpaths and getting really important exercise. Just please remember to pick up after them!

The festive season is fast approaching, so we wish everyone a very happy Christmas and a much better New Year, hopefully with COVID19 on the decline.

Christmas tree recycling early January 2022

Following Farleigh Hospice's previous successes, they will once again be partnering with Justhelping and collecting Christmas trees to be recycled! In early January 2022, a dedicated group of staff and volunteers will be collecting trees in return for a donation online. 90% of the monies raised go directly to Farleigh Hospice and the remaining 10% will be donated to other local charities. They will aim to collect on the 7th, 8th and 9th January from all around mid-Essex.

If you wish to support this initiative, then please register with them at <https://www.farleighhospice.org/events/christmas-tree-recycling>.

The Christmas Tree

Following on from the Chairman's message, the Christmas tree was purchased, and installed, slightly earlier this year. This was timed to meet the Church's Yuletide festivities. Thanks must go to Councillor Calmeyer for arranging this and the Parish Council for buying it. It was a very heavy tree this year and with the help of residents, pulled off the street, and cyclists, from their bikes, plus a van driver, we were able to get it upright into its intended location.

Here is a picture of it after it had been erected.

By the time you get this Topics, it should have been transformed with the adornment of tinsel and baubles by the ladies from the W.I.



Become a Tree Warden!

The recent Cop26 summit recognised the danger of global warming and the need for us all to try and mitigate its worst effects. It is an accepted fact that trees take CO2 out of the atmosphere as well as being a valuable natural resource. Chelmsford City Council has made available saplings that could be planted, as well as aiming to promote the role of local tree wardens. Tree wardens are local tree champions appointed by their Parish Councils to co-ordinate, plant and look after trees in their community.

Do you have an interest in all things arboreal? If so, there is an opportunity for you to volunteer as our parish tree warden. Further general information about this role can be found on <https://treecouncil.org.uk/take-action/tree-wardens/>

If you would like more detailed information about how this relates to Sandon Parish Council, then please contact the Parish Clerk (contact details at the back). Note that this post is not limited to one person.

Danbury and Villages Rotary Club/Sandon Parish Council - Crocus bulb planting Village Green, Sandon Saturday 23rd October 2021



Continuing with the nature theme, a group of 11 gallant souls attended the crocus planting on Saturday 23rd October. The weather was good and the ground was soft, so planting went very well.

Rotary started the campaign to eliminate polio from the world in 1985, inspired by the elimination of smallpox. After a couple of years fundraising and immunising children in accessible areas where Rotarians could participate, the WHO joined the campaign and was able to influence governments and widen the spread. The Bill Gates Foundation joined up later and matched all funds raised by Rotary, which continues today. Only Afghanistan and Pakistan now have the wild polio virus affecting people and no cases reported in Pakistan for six

months. Rotary must continue the programme in countries free from the virus to stop its return as well as trying to work in Afghanistan despite the dangers. One feature of the vaccination process, is that every child treated has a purple dye painted on their little finger as identification of their treatment. Hence the purple crocus.

Thank you to all the Rotary Club volunteers, the parish councillors and the local resident for their help on the day. Rotary say they will be back again next year, so you will have your chance to join us then.



The pond at Gablesfield



In case newcomers to the village were unaware, there is a pond at Gablesfield! You may not recognise it as such nowadays as it has become very overgrown. Chelmsford City Council would ordinarily keep it maintained. However, due to the Covid restrictions, and back log of work, this hasn't happened for a while now. The site is now much overgrown and the pond is hidden.

The good news is that a volunteer working party is planned to tackle this job Feb next year. This will be organised by CCC. However, they are keen that residents get involved to help. After all, it benefits their local environment. Just turn up with your own equipment and suitable clothing. Although some tools can be provided, it is best that you bring your own. If you are able to

spare an hour or so and would be interested in joining this group on the day, then can you please let the Clerk know. He can add you to a list and advise you closer to the date when this work is planned.

Proposed Sandon Community Centre

It has been four years since we embarked on this project but we have eventually arrived at a design which is acceptable to all concerned. The new proposed Community Centre will replace the Sports Club's facility and the Parish Office. It will provide changing facilities for the playing teams, a full kitchen, Parish office, a large meeting room and an open community area. Sport England has reviewed our proposal in detail and after many queries, have approved the project. The Parish Council commissioned a traffic survey to make sure the proposed project would not adversely affect the traffic on Woodhill Road and the surrounding environment.

We have now received Outline Planning Approval from the City Council and we will now proceed with full building plans and, naturally, fund raising. Any parishioner with some spare cash laying about that they would like to donate to this worthy cause will have our eternal gratitude.

We enclose for your information the architect's impression of the building



Community Speed Watch Group

Community Speed Watch is a scheme to allow **volunteers to monitor the speed of passing vehicles using a hand-held speed detection device**. The volunteers record the details of vehicles which are exceeding the speed limit by around 10%.



Sandon Parish Council are keen to get volunteers together to do regular Speed Checks on Woodhill Road, East Hanningfield Road and Southend Road. If you would be willing to volunteer and be trained please let our Clerk know on parishclerk@sandonpc.plus.com

We have registered our interest and could do with a few more willing bodies. Unfortunately, there is a waiting list for training, but it will be worth the wait.

Update on the Sandon Neighbourhood Development Plan

The Sandon Neighbourhood Development Plan steering group are continuing to make progress with the draft plan. The latest timetable is as follows:

November/December 2021

An improved version of the plan is being produced after consulting with Troy Planning, (funded by a government organisation called 'Locality'). This will include a section about 'Green Spaces' and we would like your help. **The Neighbourhood Development Plan group are adding a list of green spaces to the plan with a view to protecting these areas from development in the future. Are there any areas you feel passionate about that we have not considered, and you want to include? Note that this does not include woodland as this comes under a different heading, nor village greens as they are already protected too.**

This is our current list:

1. Playing fields at the recreation ground, Rectory Chase, Sandon, Chelmsford CM2 7SQ
2. Playing fields and playground between Gablefields, Woodhill Road, The Lintons and the A12
3. Pond at Gablefields and the wide verge at the entrance to Gablefields
4. Sandon allotment gardens, the area behind the allotments to the A12 at rear of 71 Hall Lane Sandon, and the flood land area between the allotments and Sandon Brook
5. St Andrew's Church car park, Hall Lane, Sandon, Chelmsford CM2 7RQ
6. Howe Green car park at the corner of East Hanningfield Road and Southend Road, Howe Green Sandon, Chelmsford CM2 7TJ
7. Field at Alexander Mews, off East Hanningfield Road, Sandon

If you have anymore that you wish to be added, then please contact the parishclerk@sandonpc.plus.com

Early 2022

The draft NDP will be sent to Chelmsford City Council for their comments and to start the Strategic Environmental Assessment process

Early 2022

The six week long 'Regulation 14' consultation will begin

Spring 2022

The NDP will be submitted to the examiner

Late 2022

Hopefully, a referendum will be held, and the Sandon NDP will be approved!

Community Governance Review

You may not be aware that Chelmsford City Council has been carrying out a Community Governance Review. The rationale behind this is as follows:

The district currently has 25 parish councils, one town council and one parish meeting. There is also an area in the central part of the city that currently has no parish. The review considered whether community governance arrangements across the district were suitable. It took account of areas of new or proposed housing developments to ensure these remain fit for purpose for the future.

The review also considered:

- whether to parish unparished areas, including whether to create new parish council(s) or make changes to existing parish arrangements
- any other community governance related proposals that may arise during the review

So, how does this impact our parish at Sandon?

They have decided that our boundaries should remain unchanged. However, they consider that the current allocation of seven councillors is too few. The suggestion is to increase the number to eight. Note that this is just a proposal at this stage. They are consulting with members of the public. If you have a strong opinion on this, then please get in touch with your local Chelmsford Councillor, or email Electoral.Register@chelmsford.gov.uk.

The next stages of the review are a report to the Governance Committee on the 2nd Feb 2022, with the final decision to be made at the Full Council 23rd Feb 2022. For those of you that are desperate to get onto the Parish Council, then this extra seat could give you this opportunity!

Sandon Hall Bridleway Resurfacing

The privately owned, single track concrete road has been deteriorating badly over the years with zero maintenance, despite requests from residents and Sandon Parish Council. There have been a few accidents where people have tripped and fallen, and the situation was bad. Bretts finally agreed to repair the worst section of the road at the end of October, to the relief of the residents. The road is also a Public Footpath so is used by walkers and residents alike.

Bretts closed the road for around 10 days during which time the residents had to park their vehicles elsewhere with only limited access, and walkers were asked to avoid walking there or to be very careful when passing the machinery.



Before and after repairs:

The repairs and new surface have now been applied and the residents, walkers and SPC are delighted with the result. It was worth the pain and worth waiting years for. Let us hope this surface stands the test of time!

Just a shame Bretts didn't do the whole roadway!!!!!!!!

Howe Green U.R.C.

Pam Knott writes. We have been having our usual monthly afternoon service at the Chapel, and in October had our first Coffee Morning following the 'Lockdowns'. It is always good to be able to meet with friends and neighbours in pleasant surroundings, and I think we all enjoyed it.

Now we look forward to our very special Annual Christmas Carol Service which will be on **Thursday, 16th December at 7.30 p.m.** We very much hope that you will be able to join in this very special celebration when once again the community can be together for a joyful time.

The presentation of The Sandon Cup 2021



This year 2021, The Sandon Cup is awarded posthumously to Evelyn Violet ELLIS.

Evelyn was a private person who served the community of Sandon with praiseworthy commitment and enthusiasm for over 40 years. In addition to her role as a teacher, at Sandon School, she was heavily involved with the Saint Andrews Church and the Youth Fellowship that had been founded by her late husband Peter. Evelyn was a kind and caring woman who helped many children at the Youth Club and was a driving force behind the yearly and much anticipated Pantomime. She also served as the Secretary and Vice Chair of the Sandon Village Hall Committee of Management where her organisational skills, attention to detail and

tenacity were of enormous benefit.

Sadly, Evelyn passed away on the 30th May this year at the age of 77, she had been ill for some time but kept that to herself and continued to support her community even up to a week before her passing. The award was presented to her daughter Dawn by the Parish Chairman Dee Hyatt.

Fly tipping – a modern day scourge

Unfortunately, fly tipping is on the increase across the county. Tackling the problem is very difficult. Stopping it from happening in the first place is virtually impossible, and the risk of being caught and prosecuted is rather remote. CCTV's everywhere may help, but who wants to live in a surveillance state?

Chelmsford City Council is very keen that if anyone sees fly tipping, then they approach the council a.s.a.p. They do not recommend that the offenders are approached, especially during the hours of darkness. The Council are normally very quick to sort out the problem as it is aware that the dumping of litter, unless cleared quickly, will lead to further dumping in the same area. You can report any fly tipping by using the following link:

<https://www.chelmsford.gov.uk/environment-and-public-health/report-a-street-problem/report-fly-tipping/>

Please keep vigilant when you are out and about, and if you happen to see the offence being committed, try and capture as much evidence as you can **WITHOUT DRAWING ATTENTION TO YOURSELVES**. By all of us keeping on top of this problem, then we can only hope that this menace is minimised.

Flood prevention work



Some of the less glamorous work that the Parish Council gets involved with, is helping homeowners mitigate the worst aspects of local flooding. This is a particularly topical issue bearing in mind the recent Cop26 meeting and the increased frequency of extreme weather.

An example of ditch repair work was carried out over the summer on the sharp bend from Butts Green Road up to East Hanningfield. The water came rushing down the hill then failed to turn the corner thus entering the properties at the bend. This work will hopefully stop such water causing problems in future. Note that the council can only actively repair ditches that they own. Most of the work needed is on land either owned by the land owner, or Essex Highways. Establishing who actually owns the ditch can prove problematical.

In the absence of evidence, there is a general understanding that a ditch would be dug by the adjoining owner on their land and that any soil from the ditch would be spread on their land. The boundary of the adjoining property would therefore be on the far side of the ditch. This is known as the hedge and ditch rule. This is however only a general rule which can be displaced by documentary or other evidence.

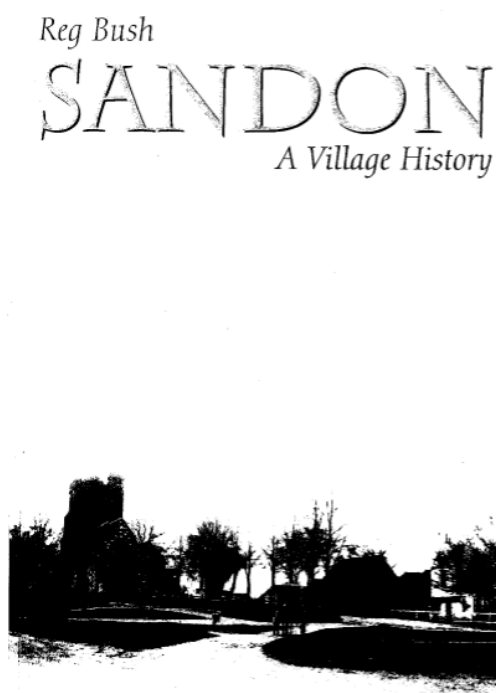
Note that the council is often unable to directly sort out the problem. However, it may be able to raise this issue with the relevant authority.

“SANDON, A VILLAGE HISTORY” BY REG BUSH –what a fantastic Christmas gift!

It's that time of the year when you are driven frantic trying to work out what presents you could give to your loved ones. Luckily enough, we can provide an answer to all of your concerns – the Reg Bush book “Sandon, a village history.”

This is a fascinating read which covers the history of the village from its earliest known origins up to the end of the twentieth century. Do you think you know everything about where you live? This book will certainly help fill in some of the gaps. What better way to understand the history of village and learn more about some of the fascinating characters that populated our parish.

Copies are available for sale from the Parish Council. They cost £10 each and can be ordered from the Clerk. He can be contacted in person either at the Parish Office, by phone 01245 477111, or by email parishclerk@sandon.info. If you live in the parish, then the book could even be hand delivered to your door. Note that all profits from this wonderful and interesting book will go to “The Friends of St. Andrews”. Order a copy NOW and remind yourself about the history of the Parish, as well as supporting the upkeep of the church



The author was born at Sandon in February 1911 and educated at Great Baddow. In 1926 he joined the staff of the County Council at the Shire Hall, Chelmsford, and ten years later was made responsible for the preparation of the Electors' Lists and the Jurors Book for Essex and for the conduct of parliamentary elections in the eight County Constituencies.

When elections were suspended at the outbreak of war in 1939 the Home Office offered him the appointment of Clerk to the Government Referees on Evacuation. After two years in that office he joined the Royal Navy and while serving in the Mediterranean as a Lieutenant-Commander in May 1945 he was urgently summoned home to supervise, in Essex, the forthcoming general election.

Retiring in 1974, he was recalled in the following year to work with the Home Office in planning the Referendum, and then to organise and conduct the Referendum and the count for the whole of Essex.

Elected to Sandon Parochial Church Council on the 5th March 1929, he has now completed seventy years as a member.

In 1950 he married Margaret (Peggy) Mott and they took up residence at Graces Cross, where they spent the next thirty-three years. They have two children, Anthony (John) and Diana, and four grandchildren.

Honours in Essex

There is an initiative headed by Her Majesty's Lord-Lieutenant of Essex, Mrs Jennifer Tolhurst, to help recognise more Essex people and volunteer groups for honours and awards. We all know of those individuals who go above and beyond to look out for others, especially during these unprecedented times. By nominating them for a national honour or award, they may be recognised for helping to make a big difference to people's lives. For details on how to nominate exceptional people and groups, please see the attached brochure or visit their website <https://www.ealc.gov.uk/essex-honours/>

Note that it doesn't have to be your noble Sandon Parish Councillors (or its Clerk!)

IMPORTANT CONTACT DETAILS

TED MUNT – CLERK Sandon Parish Council, Recreation Ground, Rectory Chase, Sandon, Chelmsford, CM2 7SQ. Tel: 01245 477111 parishclerk@sandonpc.plus.com Hours 09:30 – 12:30 Mon a.m. and Wed a.m.			
Parish Councillors		Areas of responsibility/representation	
DEE HYATT Peartree Lodge, 2 The Old Orchard, Howe Green CM2 7TX Tel: 01245 763744 cllrhyattsandonpc@gmail.com		CHAIRMAN Planning Sandon Quarry Liaison Committee Rep	
MARTIN CROSS Magrathea, East Hanningfield Road, Howe Green CM2 7TQ Tel: 01245 478910 cllrcrosssandonpc@gmail.com		VICE CHAIR Finance Parish Transport Committee	
CEDRIC CALMEYER 25 Hall Lane, Sandon, CM2 7RJ Tel: 01245 478900 cllrcalmeyersandonpc@gmail.com		Maintenance Allotments	
ALAN KALBFELL 4, The Tythings, Howe Green CM2 7TU Tel: 07802 762620 cllrkalbfellsandonpc@gmail.com		Sandon Sports Club Committee Rep Sandon Village Hall Rep	
VIC TREW Apartment 7, Sandon Brook Manor, Sandon Brook Place CM2 7UJ cllrtrewsandonpc@gmail.com		Personnel	
GARY NICHOLLS Turnpike, Butts Green Road, CM2 7RN cllrnichollssandonpc@gmail.com			
JAMES COLBECK 51 Hall Lane, Sandon, CM2 7RJ Tel: 07949849674 cllrcolbecksandonpc@gmail.com		Parochial Church Council (PCC) Rep	
ESSEX COUNTY COUNCILLOR IAN GRUNDY Tel: 01277 840737			
CITY COUNCILLORS (LITTLE BADDOW, DANBURY & SANDON)			
RICHARD AMBOR Tel: 01245 222874		2 Hay Green, Danbury, Chelmsford, CM2 4NU richard.ambor@chelmsford.gov.uk	
BOB SHEPHERD, MBE Tel: 01245 223709		2 Chase Cottages, Riffhams Chase, Little Baddow, CM3 4AU b.shepherd@chelmsford.gov.uk	
IAN WRIGHT Tel: 01245 226289		Farm Cottage, Sporhams Lane, Danbury, CM3 4AJ i.wright@chelmsford.gov.uk	
USEFUL TELEPHONE NUMBERS			
Chelmsford City Council	01245	606606	
Police	01245	491491 or ring 101	
Broomfield Hospital	01245	443673	
Citizens Advice Bureau	01245	205605	For U.C. 0800 1448444
Neighbourhood Watch	01245	471589	
LOCAL ORGANISATIONS			
St Andrew's Church - Priest in Charge	Revd Terry Brown	01245	698988
Church Wardens	Mr M. Puffett	01245	222066
	Mrs C. Jefferies	07725	973624
PCC Secretary	Mr R. Cecil	01245	224747
PCC Treasurer	Mr N. Bobeldijk	01245	471756
Bell Ringers	Dr M. Worboys	01245	224612
Women's Institute	Mrs D. Gray	01245	223609
Howe Green URC	Rev Paul Stein	07810	396410
Howe Green URC Elder	Mrs P Knott	01245	471691
Village Hall Management Committee	Ms J. Fisher	01245	475976
Village Hall Bookings https://www.sandonvillagehall.co.uk			
Cubs	Mr Steve Eatley	07957	802898
Scouts	Ms J. Blake	07956	580404
Sandon Tiny Tots/Mother and Toddler Group	Mrs A Read	01245	474858 or 07720 718372
Chelmsford Rambling Club	Ms M Say	01245	381262
Sandon Parish Magazine Editor	Mr R. Cecil	01245	224747
Sandon Sports Club	Mrs V. Kohler	07957	300027
Are your details correctly listed? If not, please contact the Parish Council Clerk on 01245 477111			

All Parish Council information is available on our website including minutes of meetings at www.sandonparishcouncil.co.uk. The Council meets at 7.15 pm on the 2nd Monday of each month. Note that we are now meeting face to face again. Members of the public are welcome to attend.

WE EXTEND A VERY WARM WELCOME TO ALL NEW RESIDENTS